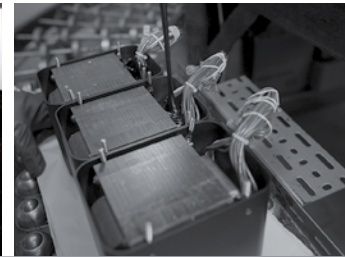


C48 stereo preamplifier

- C48 is the ultimate McIntosh preamplifier value, bridging the two worlds of conventional analog stereo source with the latest digital music sources.
- Offers control of 8 analog sources including phono cartridges, plus 4 additional programmable digital inputs and one dedicated USB computer music input.
- Unique features include home theater pass through, amplifier meter light control and RS232 software upgradability.
- Five band tone controls that may be actively programmed by input, moving coil and moving magnet phono sections are fully adjustable from the remote control volume control.



The exceptional value of this preamplifier brings all the music together.

McIntosh®

LEGENDARY PERFORMANCE™

www.mcintoshlabs.com

C48 stereo preamplifier

Frequency Response:

+0, -0.5dB from 20Hz to 20kHz
+0, -3.0dB from 15Hz to 100kHz

Total Harmonic Distortion:

0.002% maximum from 20Hz to 20kHz

Rated Output Voltage:

Unbalanced Outputs 1 & 2: 2.5Vrms
Balanced Outputs 1 & 2: 5Vrms

Maximum Voltage Output:

Unbalanced Outputs 1 & 2: 8Vrms
Balanced Outputs 1 & 2: 16Vrms

Overall Dimensions (W x H x D):

17-1/2" (44.45cm) x 6" (15.24cm) including feet x 18" (45.72cm) including the front panel, knobs and cables

Weight:

26.5 lbs (12kg) net,
41 lbs (18.6kg) in shipping carton

Inverted Double-Chassis Design:

All analog signals and amplification are nestled into the top section, protected from any noise generated by the power supply or digital circuits that are contained in the bottom section. This achieves the performance of a dual-box component with the convenience of a single-chassis component and provides for ultra-short cabling between sections.

Silent Electromagnetic Switching:

Signal routing is accomplished through digital controlled electromagnetic switching devices. Precision switch contact, isolated from environmental contamination inside inert gas-filled tubes, provide the most reliable, quietest and lowest distortion switching possible.

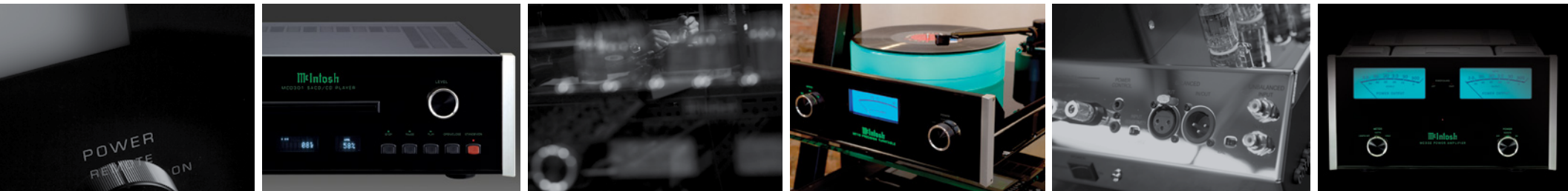


VRV (Variable Rate Volume) Digital Controlled Attenuator:

The output attenuator controls volume over 214 steps of 0.5dB each with accuracy within 0.1dB. The volume vs. rotation rate varies as preamplifier gain varies and attenuation changes occur at the zero crossings of the audio signal to prevent audible artifacts during adjustment.

For the Consumer's Protection:

In order to ensure the highest level of customer satisfaction, "new" McIntosh products may only be purchased over-the-counter or delivered and installed by an Authorized McIntosh Dealer. McIntosh products that are purchased over the Internet, by phone or mail order are presumed to be "used" and do not qualify for any McIntosh Warranty. McIntosh does not warrant, in any way, products that are purchased from anyone who is not an Authorized Dealer or products that have had their serial number altered or defaced.



Companion Products

The McIntosh MC302 Power Amplifier, MCD301 SACD/CD Player, MT10 Turntable, XR100 Loudspeakers, MEN220 Room Correction System and MPC1500 Power Controller are logical companions for the C48 Stereo Preamplifier. Your Authorized Dealer can provide additional information on other McIntosh product combinations.

To learn more, please call us at 1.800.538.6576.

McIntosh®

LEGENDARY PERFORMANCE™

www.mcintoshlabs.com