

# McIntosh MS300 MUSIC SERVER

# Quick Setup

## 1. UNPACK YOUR NEW MS300

- Unpack the MS300 and accessories (save the box).
- Install the included batteries into the remote and keyboard.
- Make note of the serial number (located on the back).

SERIAL NUMBER: \_\_\_\_\_

## 2. CONNECT THE MS300 TO YOUR AUDIO SYSTEM

- Obtain the proper connecting cables from your McIntosh Dealer.
- Connect the MS300 to any available A/V input on your receiver or TV.

**Note:** You may use optional s-video or component video cables and optional digital audio cables for the best picture and sound quality. This is also applicable to the next step, connecting changers to your MS300. Contact your McIntosh Dealer for more information.

## 3. CONNECT OPTIONAL CHANGERS TO YOUR MS300

### SONY CD CHANGERS

The MS300 requires that you connect each Sony CD changer to the back panel using audio and S-Link control cables.

Follow these steps to connect your Sony CD changers to your MS300:

- Locate the S-Link cable, with 1/8" male plugs on each end.
- Connect one end of the S-Link cable into the S-Link/IR Out jack number 1 on the back of your MS300.
- Connect the other end of the S-Link cable into the Control A1 jack on the back of your changer.
- Locate a stereo RCA audio patch cable.
- Connect one end of the RCA audio cable into the Analog In jacks number 1 on the back of your MS300.
- Connect the other end of the RCA audio cable into the Analog Line Out jacks on the back of your changer.

- If you have more than one changer, repeat these steps to connect the additional changer to S-Link and audio jack 2.
- For the best audio quality, you should also connect digital optical audio cables between your changers and the MS300.
- Make sure that all changers are set to COMMAND MODE 1.

### SONY, KENWOOD, OR PIONEER CD/DVD CHANGERS

The MS300 requires that you connect each CD/DVD changer to the back panel using audio and RS-232 control cables. **NOTE: The MS300 supports only CDs in these changers. Do not install DVDs.**

Follow these steps to connect your CD/DVD changers to your MS300:

- Locate the proper RS-232 serial cable for your changer.
- Connect one end of the RS-232 serial cable into Communication Port number 1, on the back of your MS300.
- Connect the other end of the RS-232 serial cable into the "RS-232C" port on the back of your changer.
- Locate a stereo RCA audio patch cable.
- Connect one end of the RCA audio cable into the Analog In jacks number 1 on the back of your MS300.
- Connect the other end of the RCA audio cable into the Analog Line Out jacks on the back of your changer.

- If you have more than one changer, repeat these steps to connect the additional changers to communications ports and audio jacks 2 and 3 respectively.
- For the best audio quality, you should also connect digital optical audio cables between your changers and the MS300.

## 4. CONNECT THE MS300 TO THE INTERNET

MS300 requires an Internet connection to identify the discs in connected changers, to provide additional entertainment services, and for general system maintenance.

- If you do not have an ethernet network connected to the internet and you would like to use Dialup Internet Access, you will need to connect an external modem (not included) to COM port 4 and connect the modem to a working phone line. Contact your McIntosh Dealer for details.
- If you have a broadband (cable, DSL, ISDN) Internet Service Provider, connect an ethernet cable from the MS300's ethernet jack to your ethernet network.

**NOTE:** You may need to purchase additional network hardware such as a "router". Please contact your McIntosh Dealer for more information.

## 5. POWER UP!

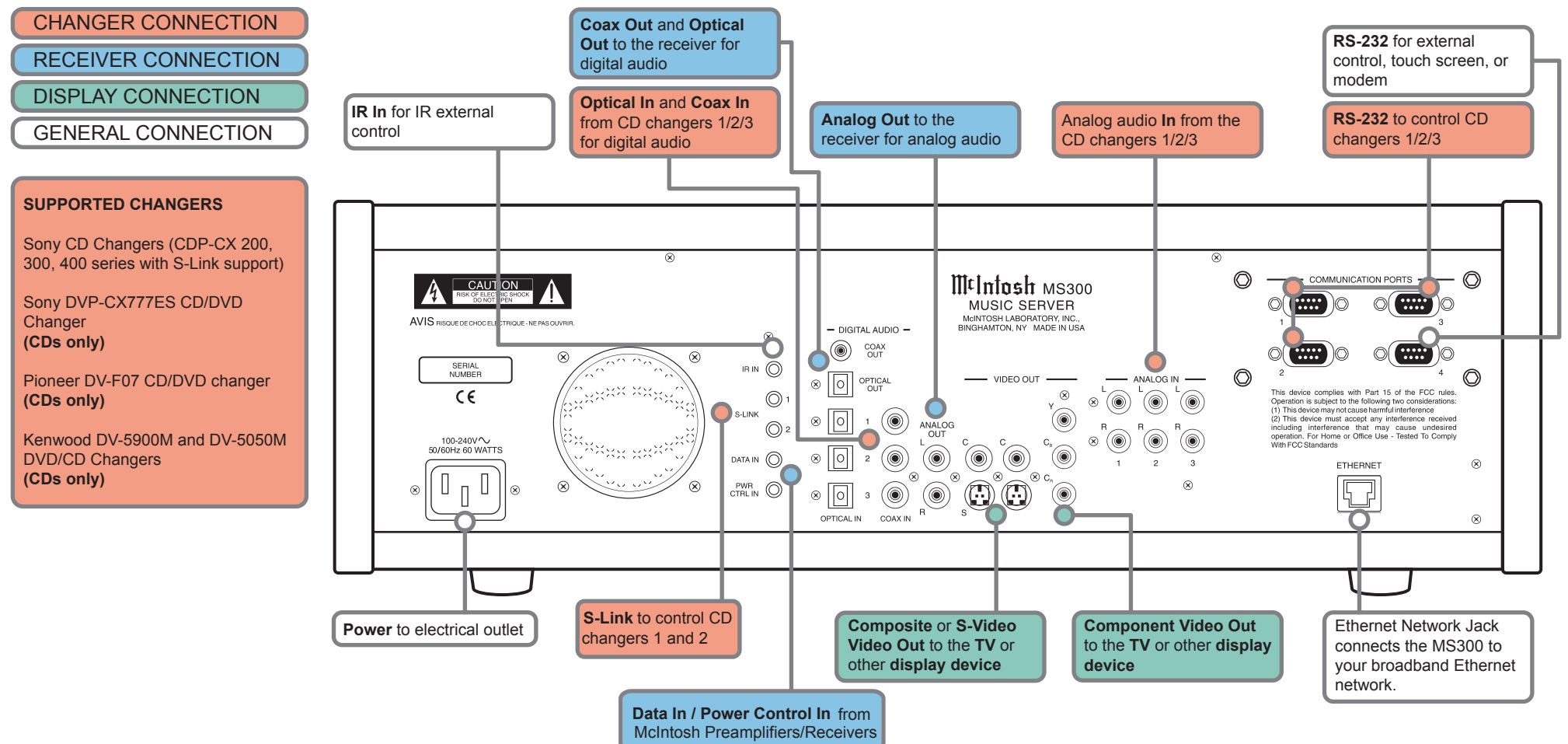
- Plug each changer into an AC outlet.
- Plug the MS300 into an AC outlet.
- The Standby LED on the front of the MS300 will begin to flash RED during the power on cycle. When the LED turns solid RED, the MS300 is ready for use.
- Press the power button on the front panel or on the remote control. The LED will turn Off and video will be displayed on the TV when the unit is on.

**Note:** You may have to press the "MS1" button on the remote to configure it to control the MS300. Also be sure the TV and receiver are turned on and set to the correct the MS300 input.

## 6. QUICK START

- Use the remote control and follow the on-screen instructions.

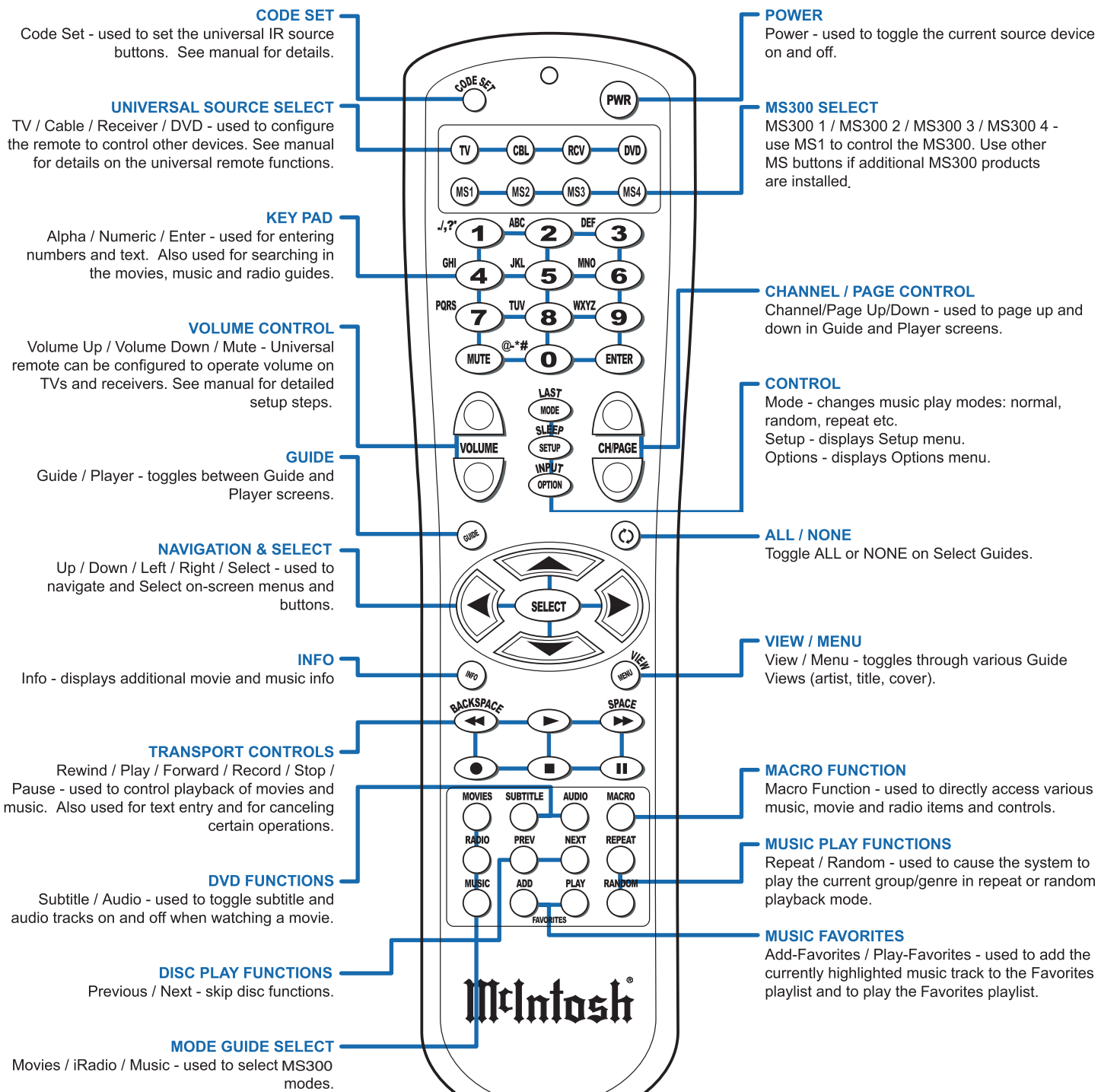
## BACK PANEL OVERVIEW:



# McIntosh MS300 MUSIC SERVER

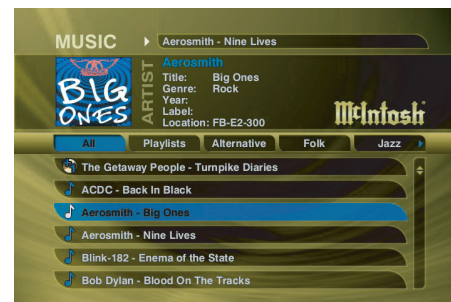
# Overview

## REMOTE OVERVIEW:



## ON-SCREEN INTERFACE OVERVIEW:

### GUIDE



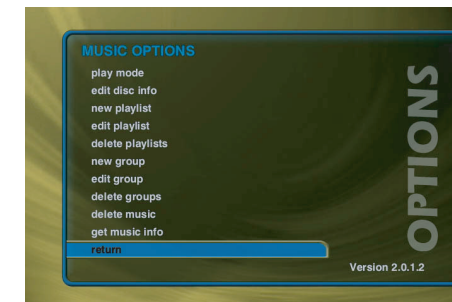
**Music Guide** - Browse and manage your Music collection

### PLAYER



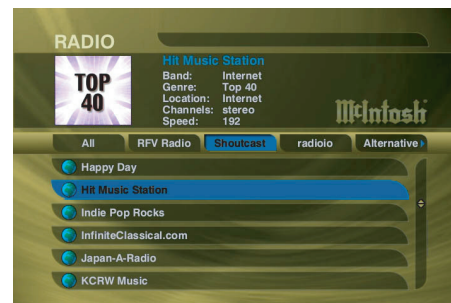
**Music Player** - display and control the currently playing music title

### OPTIONS

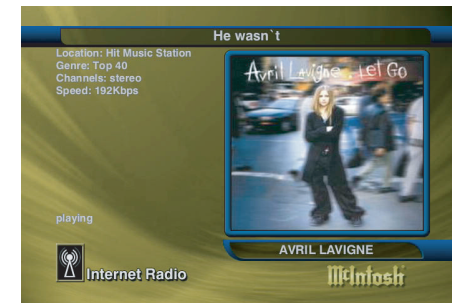


**Music Options** - allows you to create playlists and groups, edit disc information and access other music features

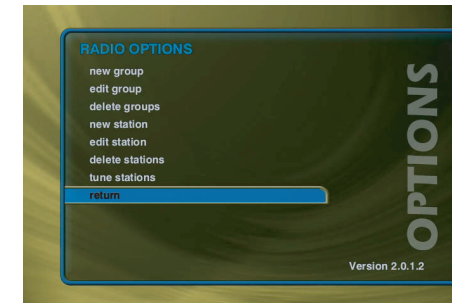
### RADIO



**Radio Guide** - browse and manage Internet radio stations



**Radio Player** - displays the currently playing radio station, location, channels and speed (if available)



**Radio Options** - allows you to create custom groups, tune new stations and access other radio features

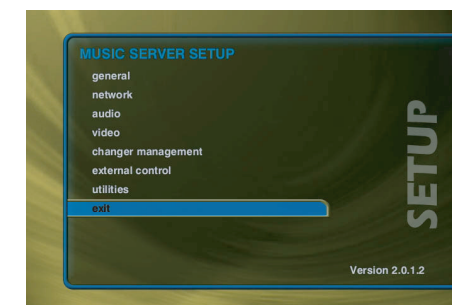
## LISTEN TO YOUR MUSIC

- Press the Music key on the remote.
- Highlight the Music Title you want to listen to.
- Press Play.
- The music begins to play.

## LISTEN TO AN INTERNET RADIO STATION

- Press the Radio key on the remote.
- Highlight the Station you want to listen to.
- Press Play.
- MS300 will connect and begin to stream (play) the station.

## SETUP



**Setup Menu** - set user preferences and configure external changers

©2005, 2006 McIntosh. All rights reserved. McIntosh reserves the right to change product hardware, features and software without notice. Upon any change, materials are updated as quickly as possible, but may not be reflected in documents already distributed. Supported hardware is updated continually.

**McIntosh Laboratory**  
2 Chambers Street  
Binghamton, NY 13903  
Hours: 8:30 am - 5:00 pm EST, M-F  
Toll Free: (800) 538-6576  
Phone: (607) 723-3512  
Fax: (607) 724-0549  
E-mail: feedback@mcintoshlabs.com

**Technical Support:**  
Hours: 9:00 am - 6:00 pm EST, M-F  
Toll Free: (866) 458-6910  
**Repair Authorization:**  
Hours: 8:00 am - 4:30 pm EST, M-F  
Toll Free: (800) 538-6576  
Phone: (607) 723-3515  
Fax: (607) 723-1917